

ALICE 32B BOILER STOVE – TECH. DATA

Wood pellet stove with integrated back boiler

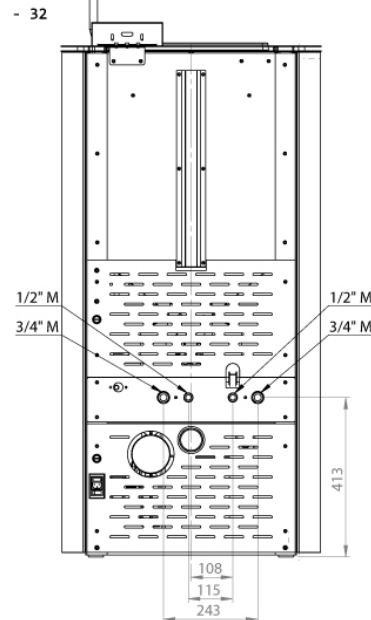
Average Thermal Heat Input (Min – Max):	8.95 – 32.41kW
Performance Efficiency (Min – Max):	94.03 – 95.79%
Nominal Overall Power Yield (Min – Max):	8.57 – 30.48kW
Power Delivered To Water (Min – Max):	6.51 – 24.38kW
Power Delivered To Room (Min – Max):	2.06 – 6.1kW
Approx. Heating Capacity – Poor Insulation:	140 – 490m ²
Approx. Heating Capacity – Good Insulation:	410 – 1,465m ²
Pellet Consumption (Min – Max):	1.8 – 6.3kg/hr
Pellet Tank Capacity:	57kg
Approx. burn time (Min – Max):	9 – 31.5hrs
Flue Outlet Diameter:	100mm
Noise Levels (Min – Max):	36 – 51dB
Electrical Requirement (working):	140W
Electrical Requirement (starting):	350W
Net Weight:	280kg
Dimensions (H x W x D):	1,427 x 645 x 738mm

Specifications & products may change at any time & without notice



Available in a selection of colours:
bordeaux, white or black with dark grey trim

Your trusted local dealer:



Swiss Cantonal Association for Fire Safety



German Association for the Development of Economy



CE Label

EN 14785

European Standard for Heating Appliances



European Certification for the Quality of Products

15a B-VG

Certification for Protection & Safety Regulations



Scandinavian Independent Research Body



Sustainable Energy Authority of Ireland

