



A+

ALMA 9 - SLIM AIR STOVE



2.1 - 8.0kW



91%



225m³



9 - 35hrs



17kg



Ø 80mm



111kg

* Heatable volume will vary,
based on fuel used and
building's insulation and
airtightness levels.



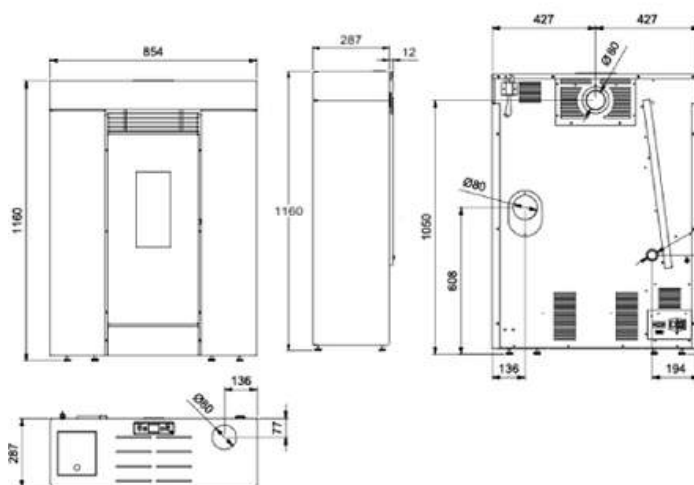
The Alma 9 is a stunning slim and compact stove, only 287mm (11.3 inches) deep. This stove has a superior build quality to most slim stoves, as shown by its weight of 111kg. It's finished in a high-quality matt steel and in a square profile with a black glass door for a modern, sophisticated look. It's Wi-Fi enabled, meaning that it can easily be connected to your mobile phone for remote access.

KEY FEATURES

- Exceptional build-quality - made to last
- Advanced, user-friendly, 6 button LCD display
- Slim profile, only 287mm deep
- Ambient fan for heat circulation
- Impressive hopper for reduced loading intervals
- Multiple safety sensors and alarms
- Control by room temperature or power level
- Remote access via Smartphone App (optional)
- Rear or top flue outlet
- Full technical aftersales & maintenance
- 5-year warranty *
- Maintenance contract available

* Subject to a maintenance contract, otherwise standard 2 year warranty applies

TECHNICAL DIAGRAM



HORUS
CALORE

COLOURS AVAILABLE



White



Grey



Red



083 123 6445

www.woodpelletstoves.ie



info@woodpelletstoves.ie