

## FUTURA 7D DUCTABLE AIR STOVE – TECHNICAL DATA



### Wood pellet stove for space heat only

#### Option to duct heat into one additional room

Average Thermal Heat Input (Min - Max):	3.90 - 7.90kW
Performance Efficiency (Min - Max):	<b>95%</b>
Nominal Overall Power Yield (Min - Max):	3.70 - 7.50kW
Approx. Heating Capacity - Poor Insulation:	60m <sup>3</sup> - 120m <sup>3</sup>
Approx. Heating Capacity - Good Insulation:	180m <sup>3</sup> - 360m <sup>3</sup>
Pellet Consumption (Min - Max):	0.8 - 1.65kg/hr
Pellet Tank Capacity:	16kg
Approx. burn time (Min - Max):	10 - 20hrs
Flue Outlet Diameter:	80mm
Electrical Requirement (Normal):	86W
Electrical Requirement (Starting):	300W
Net Weight:	95kg
Approx. dimensions (H x W x D):	940 x 475 x 480 mm



**NB:** Specifications & products are indicative only, may differ from those shown and may change at any time & without notice. E & OE.



Available in a selection of colours: black, red & white



Wi-Fi

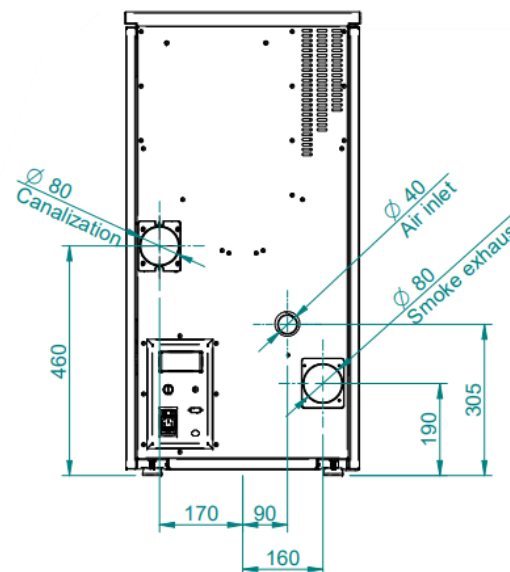


PDA



Ducted

- ✓ Double door
- ✓ Exceptionally low noise levels
- ✓ Highly efficient at 95%
- ✓ Personal Digital Assistant
- ✓ Anti-explosion



Your trusted local dealer



Swiss Cantonal Association for Fire Safety



Conformity Label



15a B-VG



Scandinavian Independent Research Body



German Organisation for the Development of Bioenergy

**EN 14785**

European Standard for Heating Appliances



Sustainable Energy Authority of Ireland

